

1 What's in the box



TransPort WR31

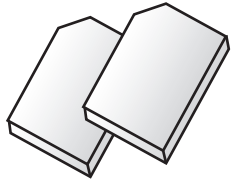
If any item is missing or damaged, please contact your supplier and note any damage that may have occurred during shipping.



Quick Start Guide TransPort WR31



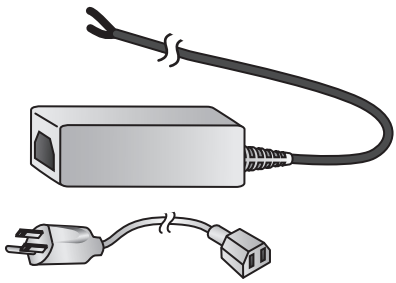
Required additional equipment



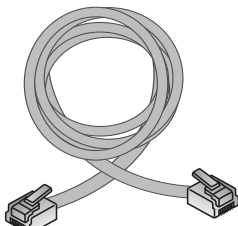
SIM card(s) - Mini-SIM (2FF) size



Cellular Antenna(s): Type SMA
Orderable on digi.com:
4G LTE Antenna 2-pack: 76000926-2
3G LTE Antenna 2-pack: DC-ANT-DBDP3-2



Power supply:
Digi part number 76000736,
orderable on www.digi.com,
or DIN rail power supply



Ethernet cable



A personal computer



Phillips-head screwdriver



Flat-head screwdriver

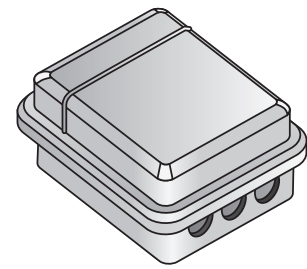
Optional equipment

The TransPort WR31 can be mounted directly to a wall using the WR31 Wall Mount Bracket (76000963).

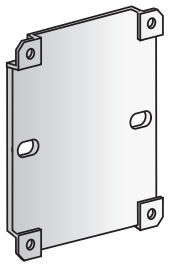
Advanced environmental protection requires a customer specified NEMA enclosure. Either the DIN mount or the TransPort WR31 Wall Mount Bracket can be used during installation.



TransPort WR31
Wall Mount Bracket
Digi part number 76000963



NEMA enclosure

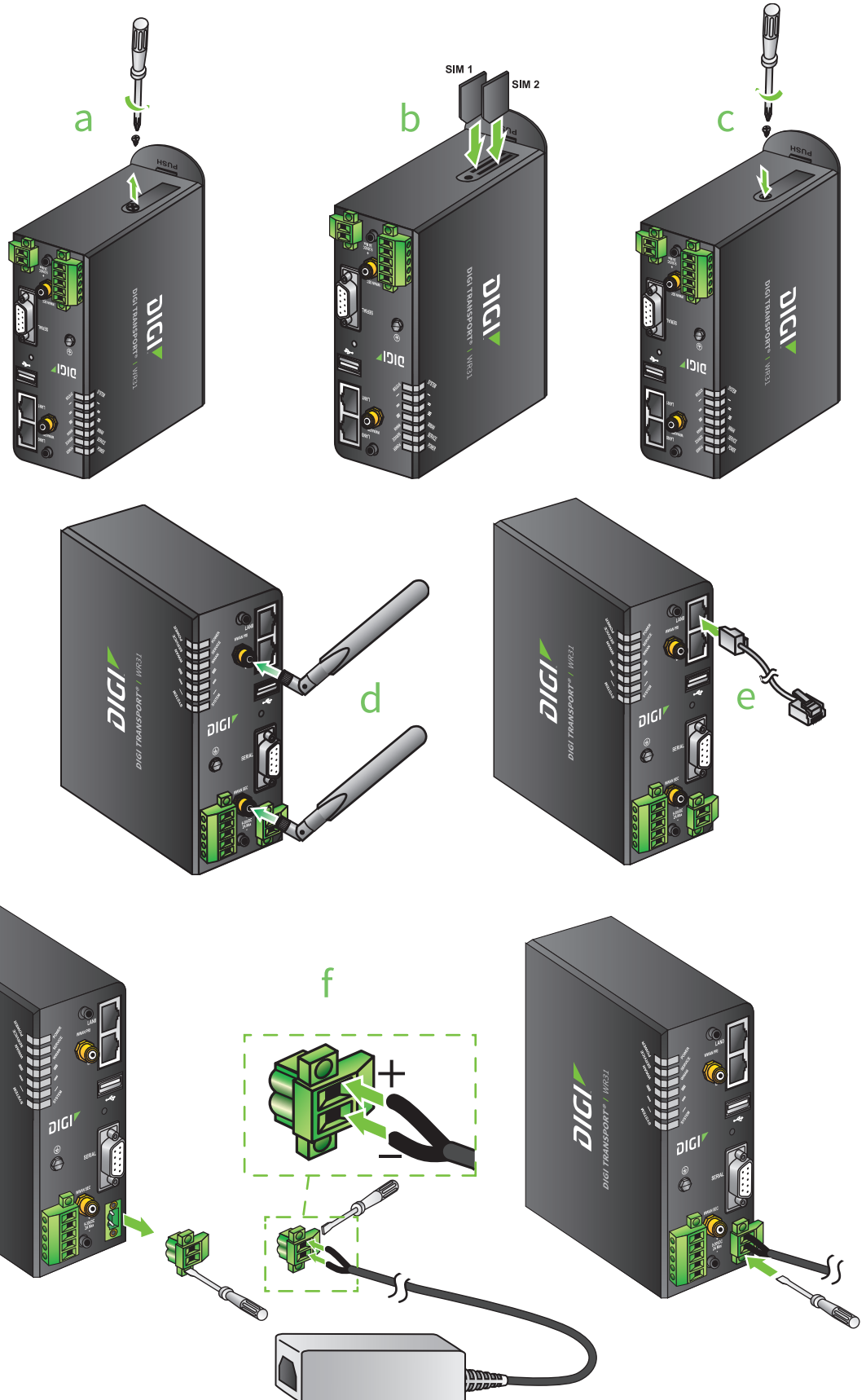


Mounting plate

2 Connect the hardware

- a** Using the Phillips-head screwdriver, remove the SIM slot cover from the underside of the unit.
- b** Insert SIM card(s) into SIM sockets. **SIM 1** is to the middle of the unit, and **SIM 2** is toward the outside of the unit. In both cases, the end of the SIM card with the chamfered corner should be inserted first.
- c** Replace the SIM slot cover.
- d** Connect the cellular antenna to the **WWAN PRI** connector on the unit. If the unit is equipped with a secondary cellular antenna connector, connect it to the **WWAN SEC** connector.
- e** Connect one end of the Ethernet cable to the **LAN 0** port on the unit and the other end to a LAN port on a PC.
- f** Connect the power supply. If using the optional power supply:
 1. Remove the pluggable connector from the unit, loosening the screws for the locking flanges as needed.
 2. Connect the wires of the power supply to the terminals, following the instructions on the power supply.
 3. Secure the terminal screws.
 4. Reconnect the pluggable connector to the unit.
 5. Secure the screws on the locking flanges.
 6. Connect the AC power to a power source.

For additional hardware installation options and instructions, see the *TransPort User Guide*. You can find the *TransPort User Guide* at www.digi.com/resources. Click the **Documentation** link and enter or scroll to the product name **Digi TransPort WR31**.



2 Connect the hardware (continued)

g Mount the TransPort WR31 on a DIN rail, directly onto the wall, or in a NEMA enclosure.

Mounting Tips:

- Position the Digi TransPort WR31 via DIN rail mounting brackets, wall-mount, or rackmount, in a location with adequate ventilation.
- The unit is designed for indoor use.
- Do not expose the unit to extremes of heat or cold, strong magnetic fields, or liquids.

For DIN rail mounting:

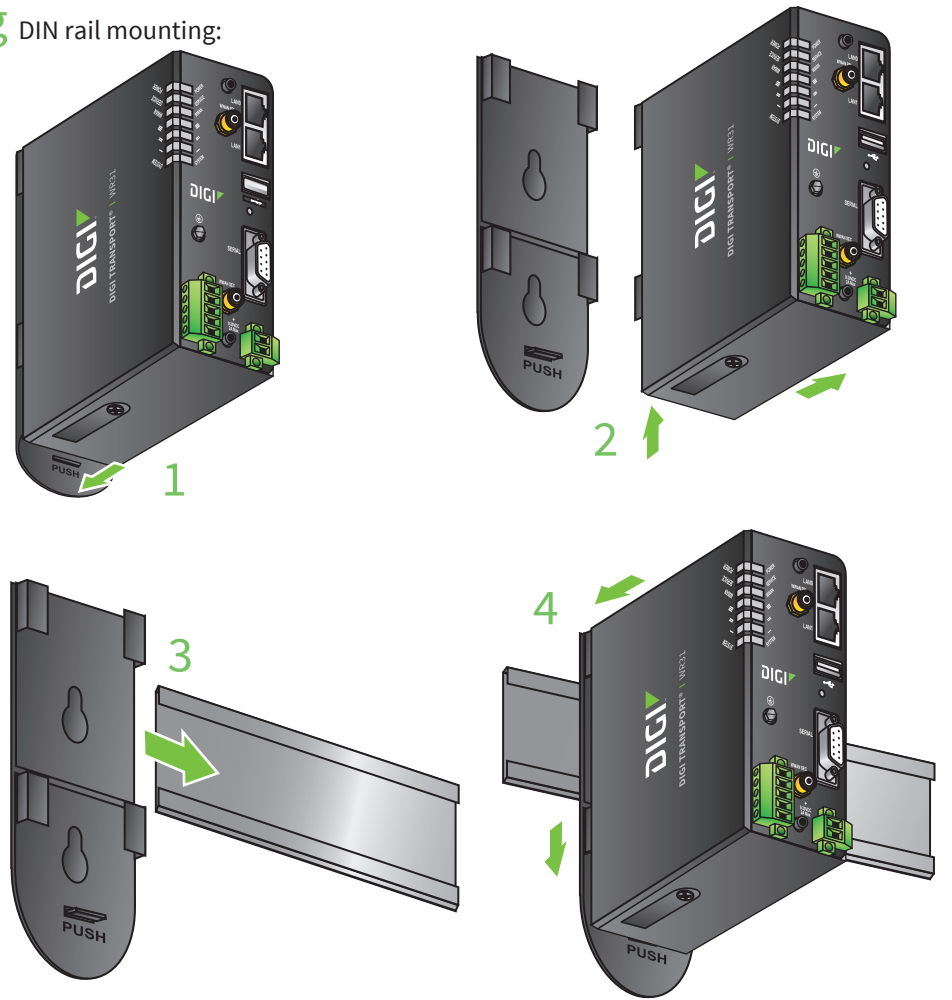
1. Apply pressure to the DIN clip release tab.
2. Slide the TransPort WR31 up; it should release from clip and fall forward.
3. Slide or snap the DIN clip onto the DIN rail.
4. Align the TransPort WR31 with the guides on the DIN clip; reverse Step 2 and slide the device into the DIN clip guides and down until it clicks into place.

For wall-mounting or NEMA enclosure mounting:

Purchase the TransPort WR31 Wall Mount Bracket (Digi part number 76000963) and NEMA enclosure equipment.

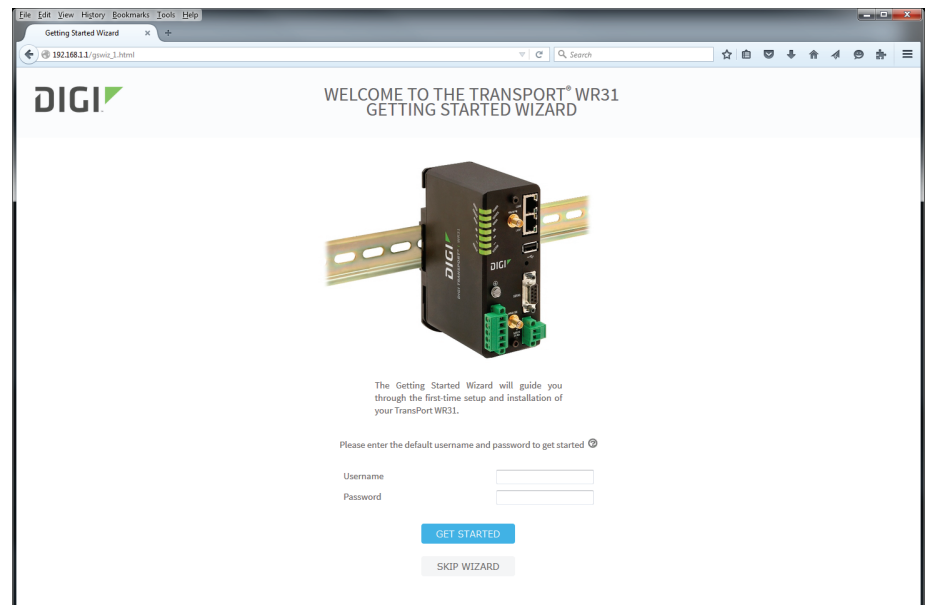
h When the unit is powered up, the **POWER** LED illuminates and the unit starts a series of diagnostic self-tests. During this process, one or more of the other LEDs will flash to show that the unit is busy. See **Step 4, View the TransPort LEDs and startup states**, for more information on LEDs. When the flashing stops, the unit has completed the self-test diagnostics and is ready to be configured.

g DIN rail mounting:



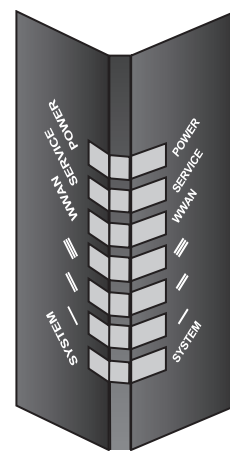
3 Run the Getting Started Wizard

- If your PC is configured to automatically get an IP address, it can get an IP address from the TransPort WR31. Otherwise, make sure your PC can connect to the network **192.168.1.0 (255.255.255.0)**.
- Enter **192.168.1.1** into the address bar of the web browser.
- The first page of the TransPort WR31 Getting Started Wizard is displayed. This wizard guides you through initial configuration for your TransPort WR31 device. Note: The default username and password to log in to the TransPort device are **username** and **password**.
 - To run the wizard, click **Get Started**.
 - To manually configure the TransPort device, click **Skip Wizard**.
- The Getting Started Wizard prompts you to enter your Digi Remote Manager username and password. If you do not already have a Digi Remote Manager account, go to <https://remotemanager.digi.com> to sign up for a free trial.



4 View the TransPort LEDs and startup states

- **POWER LED:**
 - Off:** No power
 - Green:** TransPort device is powered
- **SERVICE LED:**
 - Off:** No WWAN network connection
 - Green:** WWAN network connection
 - Flashing:** WWAN traffic being transmitted or received
- **WWAN LED:** Indicates the presence and level of cellular service running on the device.
 - Off:** No cellular service
 - 1 Blink:** GPRS mode
 - 2 Blinks:** EDGE mode
 - 3 Blinks:** UMTS mode
 - 4 Blinks:** HSDPA mode
 - 5 Blinks:** HSUPA mode
 - 6 Blinks:** LTE mode
- **SIGNAL LEDs:** Indicate strength of cellular signal.
 - 3 LEDs:** Excellent
 - 2 LEDs:** Good
 - 1 LED:** Fair
 - 0 LEDs:** Poor or No signal
- **SYSTEM LED:** Reserved for user-defined functions.



5 Next steps

After the Getting Started Wizard completes, the TransPort web interface is displayed. For additional configuration, use the web interface and refer to the *Digi TransPort User Guide*, *Technical Notes*, and *Application Notes* available at www.digi.com/resources. Click the **Documentation** link and enter or scroll to the product name **Digi TransPort WR31**.